

# Who is Foot Levelers?

The world's exclusive  
provider of custom-made  
Spinal Pelvic Stabilizers

*After 55 years, Foot Levelers  
remains the brand you can trust.*



# What are Spinal Pelvic Stabilizers?

They're inserts placed in your shoes to help improve your body's balance, posture, and overall alignment.

**No two are the same—**

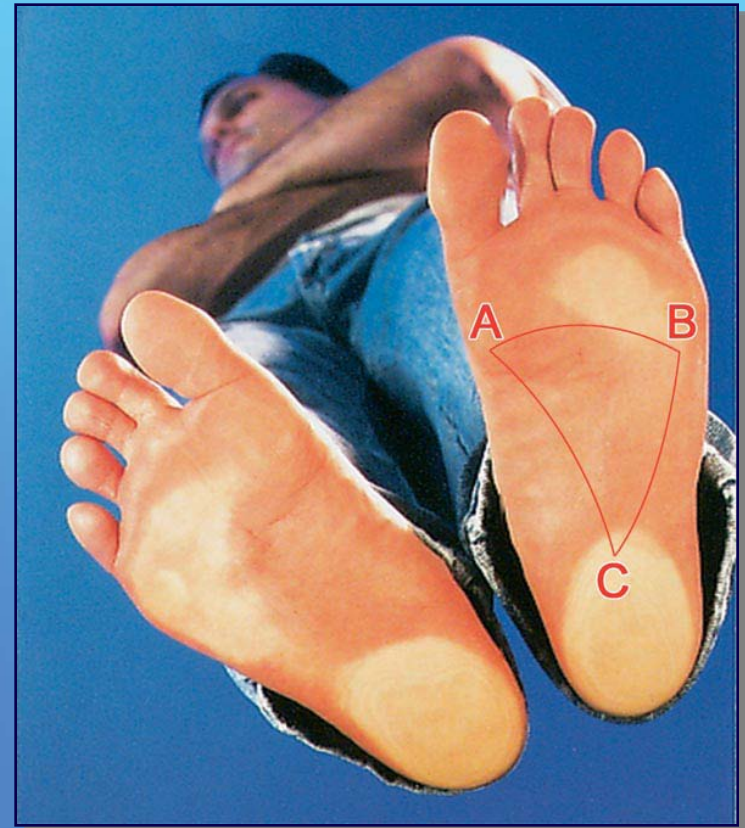
*Stabilizers are custom-made just for you!*



# Why Do You Need Stabilizers?

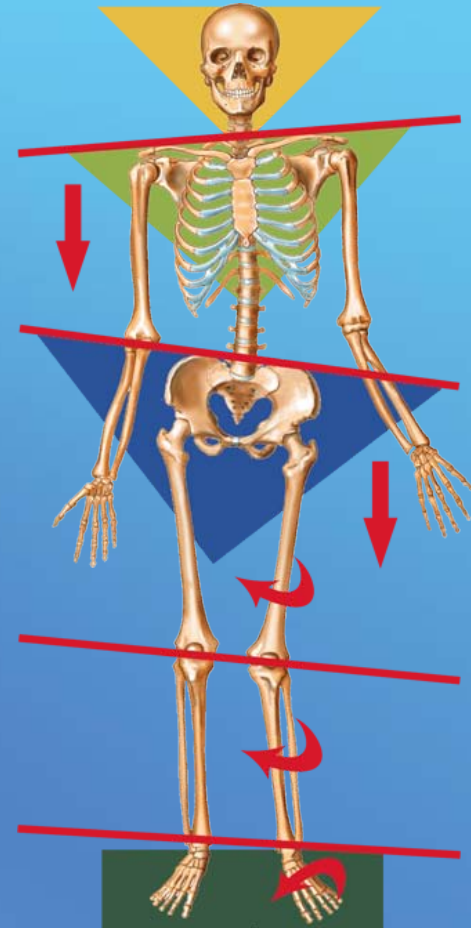
Each foot has **3 arches** that support your whole body.

If just one of those arches changes so that it doesn't support the body like it should, it causes an **imbalance** in your foot.



# Why Do You Need Stabilizers?

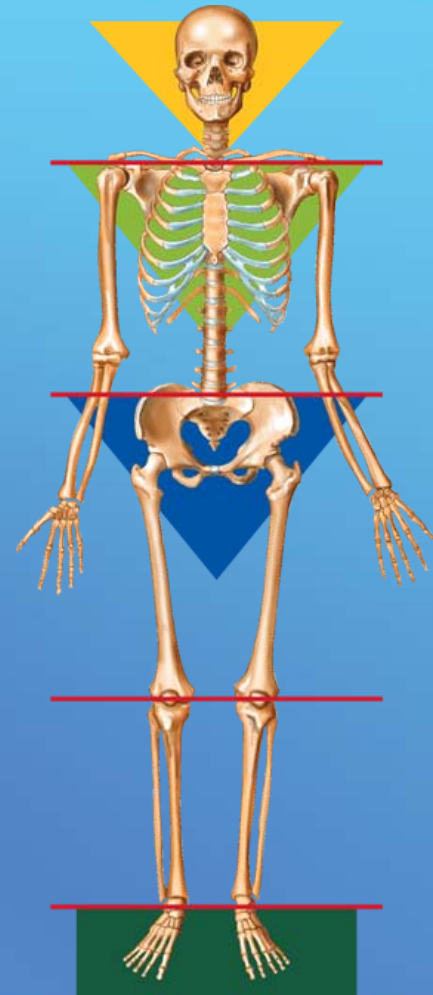
Imbalances can cause a **chain reaction of pain**—from your feet to your knees, to your hips, to your back—all the way up to your neck!





# Why Do You Need Stabilizers?

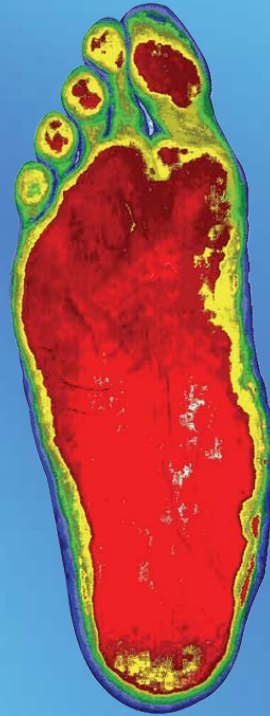
Spinal Pelvic Stabilizers help to restore the balance between the 3 arches, leveling all the structures above them



# Why Should I Be Scanned?



**Balanced  
Arch Scan**



**Fallen  
Arch Scan**

The digital foot posture scanner clearly shows where any imbalances in your feet are.

Difference in Color = Difference in Body Balance



# What Does My Scan Mean?

Your foot scan image shows two things:

- 1) Changes in the arches in your feet
- 2) If your body is balanced or not

**These images can tell your healthcare provider *many* things about your postural health!**



Balanced Arch Scan



Fallen Arch Scan



# Get in Line for Your FREE Digital Foot Scan Today!

Add Practice Information Here  
Clinic Name  
Address  
Phone Number

